



Methodist
Welfare
Services

BEGIN AGAIN

METHODIST WELFARE SERVICES
Annual Report FY2015/16

CONTENTS

Patron's Message	2
Chairperson's Message	4
Group Executive Director's Message	6
Board of Governance	8
Overview	12
Begin Again	14
Hope Again	16
Soar Again	22
Stand Again	26
Calm Again	34
Home Again	44
Happy Again	50
Fundraising Events	52
Organisation Chart	53
MWS Family	54
Centre Governance Committees	56
Committees	60

VISION

To be a leading organisation that exemplifies God's love, enabling the poor and needy to have life to the full.

MISSION

- Make the needs of the poor and needy known to all as enriched by our Methodist tradition.
- Make services available including unexplored, under-served opportunities to the poor and needy.
- Make resources available for Methodist churches to do social concerns.

VALUES

Trust

Respect Worth and Dignity of People

Uncompromising Integrity

Service before Self

Teamwork

Sound Governance

SERVING WITH A GOOD & CLEAN HEART



In the course of doing good, we need to be accountable to one another.

Our original motives for doing good might have been noble. However, it is quite possible that over time and with the gradual inclusion and support of many others, what began with good intentions might later be clouded with less altruism. It is for this reason that we are transparent about how we manage our affairs, not only in administrative and financial matters, but also in the clarity of our mission.

In our pursuit of being accountable, we might end up paying more attention to our policies and practices, and lose sight of the people who are to benefit from what we do. It is good therefore to start with having good people to give proper leadership and guidance in managing our affairs.

At MWS, we have been blessed with good people who have provided commendable leadership in guiding us to meet the many challenges during the years that we have been serving the community. A few volunteers serve on the Board of Governance while there are many others who give their time at our various centres. Then there are staff who keep the motor running for the whole organisation. That they have done a good job is seen in the recognition and awards we have received.

In the end, our accountability is to God. Human nature has a way of hiding from one another, no matter what laws or policies we may enact. But God sees through all our follies, deceptions and lies. A heightened awareness of this fact instils a genuine reverent fear of God in our hearts. This guards against compromising our values and standards of excellent service that we seek to provide.

As we continue to do good, may we do so with a good and clean heart, desiring to please the good Lord, so that those we serve may also experience the goodness of God through us.

Shalom.

Rev. Dr. Wee Boon Hup
Bishop, The Methodist Church in Singapore
Patron, Methodist Welfare Services

THE HEART OF CHANGE



Receiving the opportunity to have a fresh beginning is a powerful catalyst for our beneficiaries. For many of the 13,541 beneficiaries whom we served in FY2015/16, this may be their chance to break out of the poverty cycle that they have been trapped in.

Last year, to celebrate the twin milestones of Singapore's Golden Jubilee and the 130th anniversary of the Methodist Church of Singapore, MWS launched the GOOD (Getting Out Of Debt) Programme to liberate low income families from chronic debt. The target was to raise \$1.7 million.

We are truly grateful to the charitable foundations, corporates as well as 46 Methodist churches and their members who joined hands with MWS for the GOOD cause. Eventually \$3.4 million was raised. Praise God!

“As water reflects the face, so one’s life reflects the heart.”

Proverbs 27:19

We were able to bless 619 families, allowing them to start afresh and be empowered to plan for their future. With the surplus funds, the MWS Family Development Programme (FDP), which provides integrated and holistic financial help for families, was launched on 30 June 2016. The programme aims to meet specific needs of children, adults and elderly members of low income families. This includes help with educational cost, milk supplements, living expenses, debt management and saving for emergency needs.

The GOOD Programme and FDP are examples of MWS’ core work with the vulnerable and under-served. How well these programmes address our beneficiaries’ needs and bring about positive change hinges on our ability to develop close collaborations with partner agencies and stakeholders.

In the coming year, we are looking for more passionate people to be MWS Ambassadors, volunteers who can spark concern and actions to support the less fortunate - in giving, caring and advocating in the community. Contact us if you are interested in being that voice.

I would like to express my sincere thanks to all donors, volunteers, churches, Board of Governance, Centre Governance Committees, Committee members as well as staff for your invaluable contribution and support.

May God bless you for every positive deed, word, prayer and thought for the less fortunate. On behalf of our beneficiaries, thank you for your generosity of heart.

Rev Dr Daniel K. S. Koh
Chairperson,
MWS Board of Governance



THE POWER IN BEGINNING AGAIN

In FY2015/16, MWS impacted the lives of 13,541 beneficiaries - in providing food and shelter to the homeless, medical and nursing care for the ill, opportunity for children and youth, programmes to engage the isolated and counselling for families. But impact extends beyond programmes and services. The question is, “Has this impact led to any positive change, and for that matter, lasting positive change?”

Last year, the GOOD (Getting Out Of Debt) Programme, a one-off initiative to mark Singapore’s Golden Jubilee and the 130th Anniversary of the Methodist Church in Singapore, was a case in point. While the programme has wiped off all or a significant portion of chronic debt

carried by the beneficiaries, the question is will they now stay away from debt and have the opportunity to move up?

Madam Kong Siow Lin, a single mother to two school-going children, had her entire debt cleared through the GOOD Programme. Now, she is able to channel more money from her pay cheque to savings or meet her sons' educational needs. This augurs well for a better future for the family. But for some, long term help is needed as they have more barriers such as ill health, disability, low education leading to low wages, unemployment and domestic disputes.

At the outset of the GOOD Programme, MWS recognised the need for ongoing intervention for some of these families. This resulted in the launch of the Family Development Programme which is designed to meet the holistic and specific needs of individuals in the family.

2016 marks MWS' 35th year of impacting lives in Singapore. We have not veered from the original course of serving the vulnerable and in need. Needs have evolved over the years. Problems have become more complex, beneficiary profiles have changed.

In recent years, casting our eyes on the ageing population, we have intensified our services for seniors. MWS was one of the early providers of home-based palliative service for patients with advanced illness. To meet the growing needs of frail elderly living at home, a home-based senior care service was added. In 2017, we will also launch a 190-bed nursing home in Choa Chu Kang, our second nursing home.

We also sought to fill the gap in reaching out to under-served lower-middle to middle income seniors at risk of social isolation. Starting with Charis ACE in 2014, three more MWS Senior Activity Centres will open in 2016 to serve seniors living in studio apartments in Fernvale Rivergrove, GreenTops @ Sims Place and Teck Ghee Vista. In these centres, the seniors go beyond the label of beneficiaries. They are also our volunteers, befrienders, teachers and ambassadors of active ageing.

Thank you for playing a part in enabling MWS to fulfil its mission during our 35 years of existence. The path continues to open up and the work is far from done. We hope to have your constant support and blessing.

Mrs Jenny Bong
MWS Group Executive Director

BOARD OF GOVERNANCE

FY 2015/16
(From 26/9/2015)



**REV DR DANIEL
KOH KAH SOON**
CHAIRPERSON



**MR ALBERT
LIM SONG KHIANG**
VICE-CHAIRPERSON



**MR EUGENE
TOH MING HONG**
HONORARY SECRETARY



**MS CHRISTINE
PUSHPAM TAMBYAH**
ASST HONORARY SECRETARY



MRS FONG LOO FERN
HONORARY TREASURER



**MR TERENCE
PHUNG TUCK CHEE**
ASST HONORARY TREASURER



MR YOW CHI MUN
ASST HONORARY TREASURER



**DR DAVID
FOO CHEE GUAN**
BOARD MEMBER



DR LEE WEE LEONG
BOARD MEMBER



MRS LOH CHAY LENG
BOARD MEMBER



MR TAN CHIAN KHONG
BOARD MEMBER



**MR DAVID
WONG CHEONG FOOK**
BBM (L), BBM, PBM, PPA
BOARD MEMBER
Chairperson till 25/9/2015



REV CHIA CHIN NAM
CO-OPTED BOARD MEMBER



**MR RONNIE
GAN SEOW KHAW**
CO-OPTED BOARD MEMBER



MS IVY LAI SU CHIN
CO-OPTED BOARD MEMBER



MR LAM WEI CHOONG
CO-OPTED BOARD MEMBER



MS DOROTHY LIM
CO-OPTED BOARD MEMBER



**MR GEORGE
LOH CHEE PING**
CO-OPTED BOARD MEMBER

BOARD OF GOVERNANCE (cont'd)



REV ANIL SAMUEL
CO-OPTED BOARD MEMBER



**REV JASPER
SIM SHENQ CHYI**
CO-OPTED BOARD MEMBER



**MR TERENCE
WEE JIN ZOO**
CO-OPTED BOARD MEMBER



**MR WENDELL
WONG HIN PKIN**
CO-OPTED BOARD MEMBER

Not pictured:

MR KIM SEAH TECK KIM
EX-OFFICIO, THE SECRETARY OF THE TRUSTEES OF THE
METHODIST CHURCH IN SINGAPORE

MR DARIUS CHUA
DIRECTOR, FINANCE, ADMINISTRATION & PROGRAMMES
(THE METHODIST CHURCH IN SINGAPORE)

Stepped down on 26/9/2015:

MRS TAN EE LENG
HONORARY SECRETARY

MR GAN KOK BENG
ASST HONORARY SECRETARY

MR JOSEPH TOH
HONORARY TREASURER

MR ROBIN CHEONG
ASST HONORARY TREASURER

MR CHAN KUM KIT
CO-OPTED BOARD MEMBER

MR AUBECK KAM
CO-OPTED BOARD MEMBER

MWS is a member of NCSS/IPC Status has been renewed until 30 September 2017.
Charity Registration No: 00166/UEN S81SS 0088H

Bank: The Development Bank of Singapore Limited

Auditor: Baker Tilly TFW LLP

Pro Bono Legal Service Provider: Drew & Napier LLC

Corporate governance guidelines are set out in the MWS Constitution.

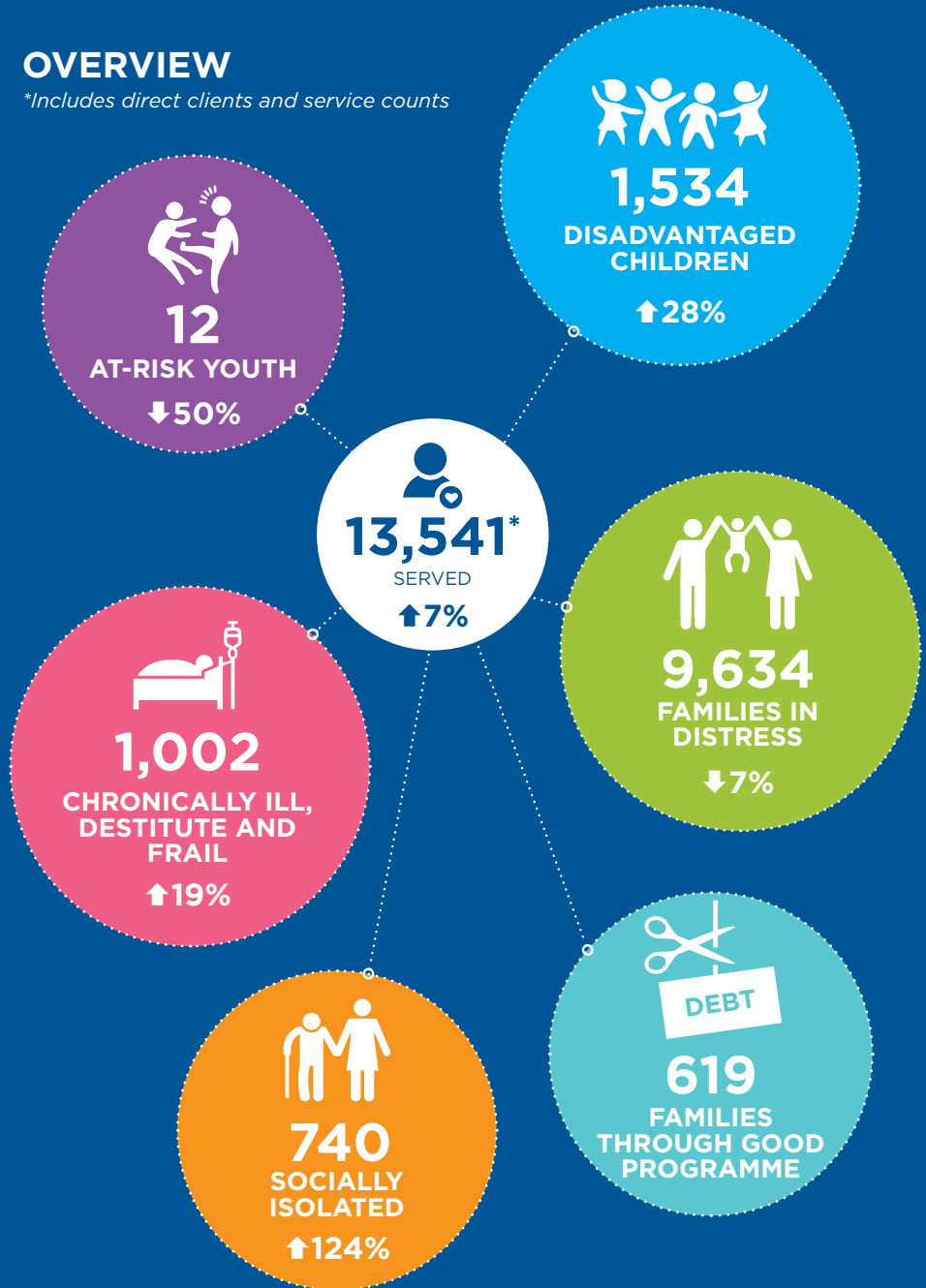
Conflict of Interest

- All Board of Governance (BOG) members and Centre Governance Committee (CGC) members are required to declare any business, commercial or financial interest where such interest might be construed as being in conflict with their official duties in MWS.
- A declaration document is to be completed by all BOG and CGC members upon election/ appointment to the Board or CGC.
- The procedures for handling all conflicts of interest are documented in the MWS Policy on Conflict of Interest.
- Conflicts of Interest pertaining to employees are covered in the MWS Human Resource Policy.

Chairperson	<p>Rev Dr Daniel Koh Kah Soon <i>Doctor of Philosophy (Social Ethics)</i> Pastor, The Methodist Church in Singapore Lecturer, Trinity Theological College Appointed as Chairperson from 26.09.2015 Appointed as Vice-Chairperson from 28.09.2013 to 26.09.2015 Appointed as Vice-Chairperson from 17.09.2011 to 28.09.2013</p>
Vice-Chairperson	<p>Mr Albert Lim Song Khiang <i>Master of Social Sciences (Counselling)</i> Director, El-Shaddai Resources Pte Ltd Appointed as Vice Chairperson from 26.09.2015 Appointed as Chairperson from 12.09.2009 to 16.09.2011 Appointed as Vice Chairperson from 08.09.2007 to 12.09.2009 Appointed as Vice Chairperson from 30.07.2005 to 08.09.2007 Appointed as Honorary Secretary from 28.06.2003 to 30.07.2005 Appointed as Assistant Honorary Secretary from 23.06.2001 to 28.06.2003 Honorary Treasurer from 28.08.1999 to 23.06.2001 Appointed as Assistant Honorary Treasurer from 19.07.1997 to 28.08.1999 Other Key Appointment Board Member, National Council of Social Service</p>
Honorary Secretary	<p>Mr Eugene Toh Ming Hong <i>Master in Business Administration</i> <i>Master in Electrical and Computer Engineering</i> Director (Policy), Energy Market Authority of Singapore Appointed as Honorary Secretary from 26.09.2015</p>
Assistant Honorary Secretary	<p>Ms Christine Pushpam Tambyah <i>Master of Education</i> Deputy Director (Special Education), Ministry of Education Appointed as Assistant Honorary Secretary from 26.09.2015</p>
Honorary Treasurer	<p>Mrs Fong Loo Fern <i>Bachelor of Accountancy</i> Managing Director, CYC Shanghai Shirt Co Pte Ltd Appointed as Honorary Treasurer from 26.09.2015 Appointed as Assistant Honorary Treasurer from 28.09.2013 to 26.09.2015 Appointed as Assistant Honorary Treasurer from 17.09.2011 to 28.09.2013 Appointed as Assistant Honorary Secretary from 12.09.2009 to 17.09.2011 Other Key Appointments Board member, Nanyang Academy of Fine Arts Treasurer, Textile & Fashion Federation</p>
Assistant Honorary Treasurers	<p>Mr Terence Phung Tuck Chee <i>Bachelor of Accountancy (Honours)</i> Retired Appointed as Assistant Honorary Treasurer from 26.09.2015</p> <p>Mr Yow Chi Mun <i>Master of Business Administration</i> Portfolio Manager, Precept Investments Pte Ltd Appointed as Assistant Honorary Treasurer from 26.09.2015</p>

OVERVIEW

**Includes direct clients and service counts*



Fundraising Highlights



7%

Fundraising
Cost



93¢

of every dollar raised
went directly to
MWS centres and
programmes.

In FY2015/16, MWS received donations and sponsorships amounting to \$12 million. MWS kept its fundraising cost to 7% of funds raised, well below the 30% ceiling guideline set by the Charity Council.

Our Invaluable Volunteers



1,783

INDIVIDUALS

56

GROUPS

lent their time, talent and skills at 13 centres.



Any deficits incurred by programmes were underwritten by MWS.



52%

CHRONICALLY
ILL, DESTITUTE
AND FRAIL



21%

FAMILIES IN
DISTRESS



7%

DISADVANTAGED
CHILDREN



3%

AT-RISK
YOUTH



2%

SOCIALLY
ISOLATED



15%

MANAGEMENT
& SHARED
SERVICES

BEGIN AGAIN



Mdm Kong, a GOOD Programme beneficiary, is now able to plan for the future with her sons.

Beneficiaries mired in chronic debt often find it impossible to look forward and plan for the future. Running into deficits every month and having less than \$100 to their name drive them further into debt, especially when crises such as illness or sudden unemployment strike.

2015 was an empowering Jubilee year for 619 families. Through the GOOD (Getting Out of Debt) Programme, which celebrated Singapore's Golden Jubilee and the 130th anniversary of the Methodist Church in Singapore, they were blessed with a clean slate and the chance to make things right this time.

***“With man this is impossible,
but with God all things are possible.”***

Matthew 19:26

GOOD PROGRAMME OUTCOMES



**70 GOOD
ADVOCATES
LABOURED**



**44
SOCIAL SERVICE
AGENCIES
PARTNERED**



**46
METHODIST
CHURCHES
INVOLVED**



**14
FINANCIAL
WORKSHOPS
ORGANISED**

**\$3.4
MILLION
RAISED**



**3,500
PEOPLE TOOK
PART IN WHEELS
FOR GOOD**



**1
MWS FAMILY
DEVELOPMENT
PROGRAMME
LAUNCHED**



**619
FAMILIES
BLESSED**

CAROLINE CHANG
LEARNING TO TRUST

HOPE AGAIN

Caroline's mother left home when she was just two years old. Her father struggled to juggle work and caregiving responsibilities. Caroline was brought to D'Joy Children's Centre, but she was fearful of being abandoned once again. The care and assurance from teachers at D'Joy helped Caroline to trust and make friends. With Caroline well taken care of, Mr Chang can now work with peace of mind.

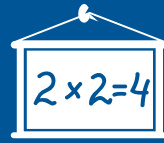


HOPE FOR
DISADVANTAGED
CHILDREN

OUR YOUNG BENEFICIARIES REQUIRE:



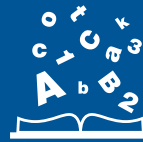
CHILD CARE



ACADEMIC
NURTURING



CHARACTER
BUILDING



CREATIVE
DEVELOPMENT
AND EXPERIENTIAL
LEARNING

NURTURED 1,534 DISADVANTAGED CHILDREN

↑28%



PROVIDED A SAFE ENVIRONMENT TO



189

children through child and student care

↑2%

PROVIDED

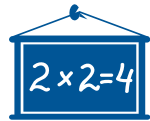


1,295

students with bursaries for their education*

↑51%

HELPED



50

students to catch up on their school work through tutoring

↓35%

The Student Care Centre at D'Joy Children's Centre (DJCC) was closed in March 2016 due to falling demand. DJCC will focus on augmenting its childcare services to serve growing young families in the estate. Daybreak Student Care Centre's lease with the Ministry of Education ended in December 2015.

**The MWS Bursary Programme has been incorporated in the MWS Family Development Programme*



D'JOY CHILDREN'S CENTRE

Child and student care service located in Jalan Besar

Established: 2000



↑2%

Our full-day child and student care centres provided after school care, literacy programmes, educational field trips and values training to lay the foundation for life-long learning and development.

DJCC is a community outreach partnership of MWS and Hingwa Methodist Church.

Manipulative Corner

Art and Craft Corner



LINA YEN
ASPIRING TOP CHEF

SOAR AGAIN

Lina once had more interest in fighting, drinking and taking drugs than studying. That choice led to a one year probation at Residence @ St. George's.

Through counselling support and therapy, the secondary one drop-out broke free of what used to tear her up. She also discovered a passion in cooking and went on to earn a certificate in culinary arts. She now works as a chef.



TROUBLED YOUTHS NEED



RECONCILIATION
WITH FAMILY
MEMBERS



REINTEGRATION
INTO THE
COMMUNITY



GROUNDING IN
COMPASSION AND
AFFIRMATION





RESIDENCE @ ST. GEORGE'S

Established: 2011

**GAVE A SECOND
CHANCE TO**



↓50%

RSG provided structured and meaningful rehabilitation based on the Social Emotional Learning Framework.

Girls were guided on building positive relationships and making responsible decisions.

They were reintegrated into the community by going back to school, learning a vocation they are passionate about, and reconciling with estranged family members.

RSG is a community outreach partnership of MWS and General Conference - Women's Society of Christian Service.

KONG SIOW LIN
EMPOWERED TO START ANEW

STAND AGAIN

In the last few years, single mother Mdm Kong struggled to provide for her two children. Not making enough, she defaulted on utilities and rent. Through the GOOD Programme in 2015, her debts were fully cleared, liberating her from daily anxiety. She now draws a stable income and is empowered to start life anew for the sake of her young sons.



**OUR DISTRESSED FAMILIES FACE
MULTIPLE COMPLEX ISSUES SUCH AS:**



**FINANCIAL
DISTRESS
28%**



**FAMILY
VIOLENCE
18%**



**MARITAL
ISSUES
13%**



**FAMILY
ISSUES
11%**

HELPED 9,634 FAMILIES OVERCOME CHALLENGES

↓7%

Casework has fallen due to changes in the family service model made by the Ministry of Social & Family Development. Less complex cases are now managed by Social Service Offices.



Helped

1,792

families and individuals resolve personal, social and emotional difficulties through counselling and casework

↓12%



Connected

2,787

families to relevant and complementary assistance

↓12%



Reached

4,403

families in need within the community

↓6%



Disbursed financial assistance to

652

low-income families through Walk With the Poor Programme*

↑41%

**Incorporated in the MWS Family Development Programme.*

STRENGTH FOR
FAMILIES IN
DISTRESS

MWS FAMILY SERVICE CENTRES

Covenant FSC



↓8%

Established: 1987

CFSC is a community outreach partnership of MWS and Paya Lebar Methodist Church

Daybreak FSC



↑25%

Established: 2000

Tampines FSC



↓33%

Established: 1991

TFSC is a community outreach partnership of MWS and Pentecost Methodist Church

Helped distressed families and individuals through casework and counselling, group work, community work as well as information and referral services.



Counselling
& Casework



Information
& Referral



Community
Outreach
Programmes

Covenant
FSC

684
(↓7%)

977
(↓3%)

971
(↓13%)

Daybreak
FSC

573
(↓19%)

886
(↓10%)

1,669
(↑104%)

Tampines
FSC

508
(↓9%)

924
(↓21%)

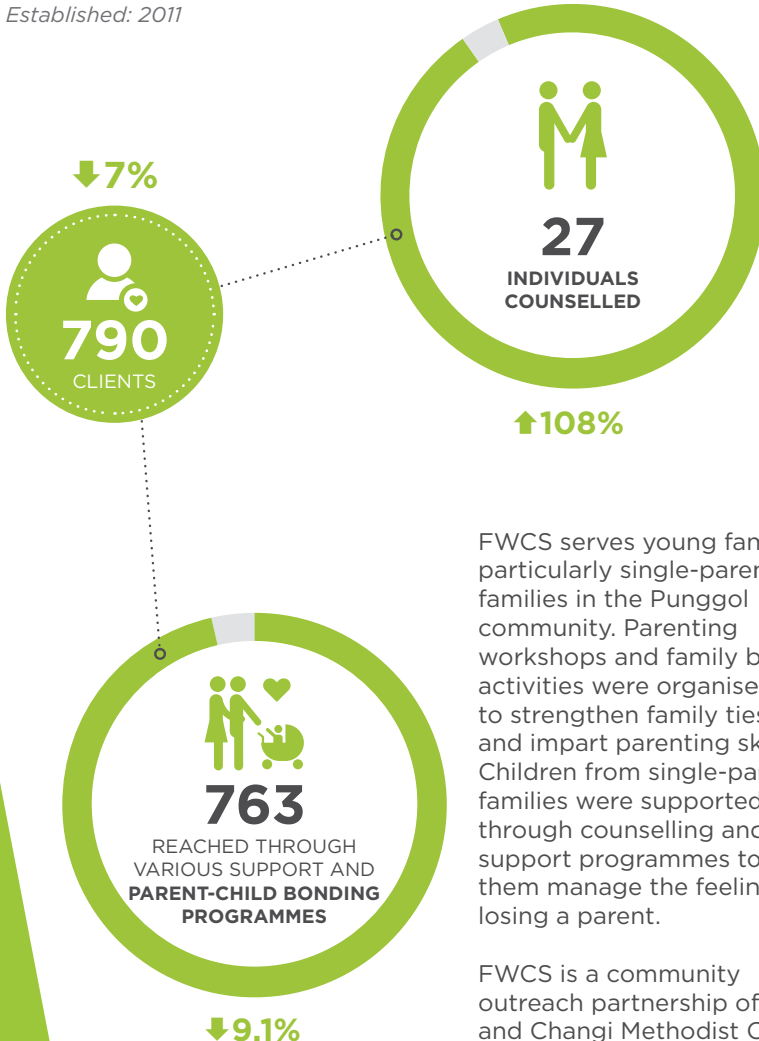
1,000
(↓48%)



STRENGTH FOR
FAMILIES IN
DISTRESS

FAMILYWORKS COMMUNITY SERVICES

Established: 2011



FWCS serves young families, particularly single-parent families in the Punggol community. Parenting workshops and family bonding activities were organised to strengthen family ties and impart parenting skills. Children from single-parent families were supported through counselling and peer support programmes to help them manage the feelings of losing a parent.

FWCS is a community outreach partnership of MWS and Changi Methodist Church.



Father bonds with his children at a family camp conducted by FWCS.

KOH GIM HOCK
WORKING TOWARDS WALKING

CALM AGAIN

A stroke greatly debilitated Mr Koh and left him wheelchair-bound. Intensive rehabilitative support from the multi-disciplinary team at Bethany Methodist Nursing Home gave him the hope and care he needed to improve his functions. He can now walk with assistance, allowing him to engage in activities in the home.



**CARE FOR THE
CHRONICALLY ILL,
FRAIL & DESTITUTE**

**OUR CHRONICALLY ILL, FRAIL AND
DESTITUTE BENEFICIARIES REQUIRE:**



**INTENSIVE
NURSING CARE**



MEDICAL CARE



SHELTER



**HELP WITH
ACTIVITIES OF
DAILY LIVING**

CARED FOR 1,002 CHRONICALLY ILL, FRAIL AND DESTITUTE BENEFICIARIES

↑19%



Provided critical support for

543

ill and frail patients living at home

↑31%



Sheltered

171

destitute people

↓1%



Provided round-the-clock critical support and nursing care to

288

patients

↑12%

CARE FOR THE
CHRONICALLY ILL,
FRAIL & DESTITUTE

AGAPE METHODIST HOSPICE (HOMECARE)



Palliative home care service

Established: 2007



↑22%



↑21%

AMH (Homecare) provided palliative home care services, including 24-hour on-call support, for patients with advanced illnesses to manage pain, increase their quality of life and allow them to spend their last days at home with loved ones.

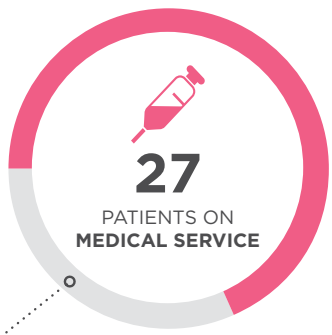


Provided home-based medical, nursing, therapy and home personal care to help seniors age-in-place with dignity.

MWS HOMEJOY

Home health and care services for frail and home-bound patients

Established: October 2015

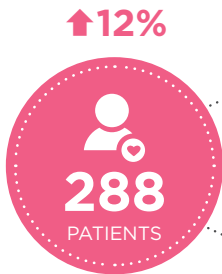


CARE FOR THE
CHRONICALLY ILL,
FRAIL & DESTITUTE

BETHANY METHODIST NURSING HOME

Nursing home for
chronically ill patients
who need round-the-clock
medical and nursing care

Established: 2000



Residents received
nursing, medical care and
rehabilitation aimed at
improving, maintaining or
delaying the decline of state
of health and function.



CHRISTALITE METHODIST HOME

Home for the destitute

Established: 1997



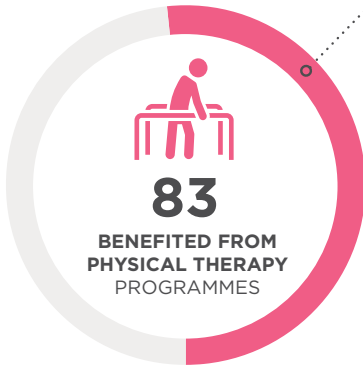
Residents suffering from or are at risk of dementia go through reminiscence therapy to help stave off deterioration of their mental faculties.



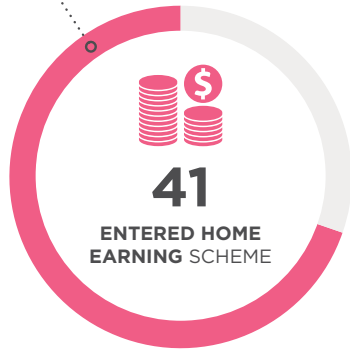
It also provided therapy to residents with dementia or showing signs of dementia.



Suitable residents were reintegrated into the community, some were placed in jobs.



CMH enabled residents to improve muscle strength and function through specialised exercise for the frail and elderly.



41 residents regained a sense of independence and accomplishment through gainful employment in the Home Earning Scheme.

CMH is a community outreach partnership of MWS and Christ Methodist Church.

CHIN KAH LAN
LOVED BY HER COMMUNITY

HOME AGAIN

When widowed 77-year-old Mdm Chin fell gravely ill in 2015, members and volunteers from Charis ACE banded together to provide much needed comfort to her. Aunty Kah Lan, as she is affectionately known, was greatly warmed by the community of support that got her through this difficult time. After a successful operation, she was able to rejoin the centre's activities and, more importantly, her friends.



**WARMTH FOR THE
SOCIALLY ISOLATED**

OUR BENEFICIARIES AT RISK OF SOCIAL ISOLATION NEED



**TO STAY HEALTHY
AND ACTIVE**



**A SENSE OF
BELONGING TO
THE COMMUNITY**



**OPPORTUNITIES
TO CONTRIBUTE
BACK**



ENGAGED 740 SENIORS AND MIGRANT WORKERS AT RISK OF SOCIAL ISOLATION

↑124%



Provided engaging social and learning activities to help build up a warm community for

340

seniors

↑3%



Improved seniors' mental and physical health through wellness and fitness programmes



Provided para-counselling and language/IT training to

400

migrant workers

MWS SENIOR ACTIVITY CENTRES



Seniors tending to the Geylang East Grove Community Garden.

Enabling seniors to age in place

MWS Senior Activity Centres provided engaging social and learning activities to help build the seniors' social networks. We also organised wellness and fitness programmes to help seniors stay active and healthy.

Charis Activity Centre for Elders

Established: 2014



Charis ACE is a community outreach partnership of MWS and Charis Methodist Church.

Wesley Seniors Activity Centre

Established: 2010



WSAC is a community outreach partnership of MWS and Wesley Methodist Church.



MWS SEVA

Outreach to migrant workers

Established: November 2014



MWS Seva provided para-counselling services to migrant workers at Westlite Dorm, covering areas such as career, finance, health and education, to help them cope with adjustment issues. Language and IT classes were also conducted for the workers.

MWS Seva is a community outreach partnership of MWS and Singapore Telugu Methodist Church.

HAPPY AGAIN

The miracle is not that we do this work, but that we are happy to do it.

~ Mother Teresa



1,783

INDIVIDUALS

56

GROUPS

1,783 individuals and 56 groups of volunteers from churches, schools, corporate and informal groups found a cause close to their hearts in MWS-run centres and programmes.



**DOROTHY WONG (IN PINK)
CHEERFUL BEFRIENDER**

Since Wesley Seniors Activity Centre opened its doors in 2010, Mrs Dorothy Wong has been serving and befriending the seniors living in rental blocks in the centre's vicinity. Her warmth coupled with her strong dedication earned her the trust and friendship of many seniors.

"When WSAC first opened, I liked the environment and the role that was available for me to serve. I continue to come weekly as the seniors now trust me enough to share their concerns with me. Their acceptance of me is a reward in itself that makes my time and service here very meaningful."



**CHIA LAI KIM (LEFT)
GALVANISER**

For 6 years, Lai Kim visited her grandmother who was a resident in Bethany Methodist Nursing Home. During her frequent visits, she grew closer to other residents. She felt the increasing desire to make their morning exercises more fun and engaging.

This prompted her to start the Thursday Volunteer Group that helps residents improve their mobility and functional abilities through rehabilitative exercises and simple ward-based games.

Despite an hour-long commute, she remains faithful to the programme and recently marked her third year of volunteering.

FUNDRAISING EVENTS

GOOD (Getting Out of Debt) Programme

To celebrate the twin milestones of MCS 125th Anniversary and the Golden Jubilee of Singapore's independence, MWS launched the GOOD Programme to cancel chronic debt of everyday living that burdened families in need. During the fundraising drive, \$3.4 million was contributed by corporate donors, foundations, Methodist churches and church members, and the community. Another 3,500 people participated in Wheels For GOOD, a 13/50km cycling event that culminated in a fun carnival at Bishan-Ang Mo Kio Park on 15 August 2015.

Holy Week

(March/April 2015)

The Holy Week Concert was produced by Ms Wendy Tan and presented in Faith Methodist Church. It was promoted by Aldersgate Methodist Church, Barker Road Methodist Church, Faith Methodist Church and Living Waters Methodist Church, and raised more than \$40,000 for the GOOD Programme.

MWS Fellowship on the Greens

(29 July 2015)

MWS' annual Charity Golf Tournament – Fellowship on the Greens, was convened by Charis Methodist Church in 2015. The event saw 240 golfers, donors and sponsors come together for a day of fellowship at Tanah Merah Country Club. More than \$290,000 was raised for MWS and Charis Activity Centre for Elders.

An Enchanted Evening

(3 January 2016)

More than 500 donors, sponsors and guests attended this annual charity gala chaired by Mrs Swee Wong. For the 11th year, the gala raised more than \$600,000 which was channelled to services run by MWS and one other charity.

MWS Hong Bao Drive

(February 2016)

Students from 26 schools and church kindergartens shared their red packet money generously with the less fortunate during Chinese New Year. In total, over \$140,000 was received.

ORGANISATION CHART

MWS BOARD OF GOVERNANCE

GROUP EXECUTIVE DIRECTOR

(appointed 2 June 2008)

Group Director Finance & Administration	AMH Head	Agape Methodist Hospice CGC
DIRECTOR Human Resources	BMNH Head	Bethany Methodist Nursing Home CGC
DIRECTOR Communications & Engagement	CACE Manager	Charis ACE CGC
DIRECTOR Service Planning & Development	CFSC Director	Covenant Family Service Centre CGC
CHAPLAIN	CMH Director	Christalite Methodist Home CGC
	DFSC Director	Daybreak Family Service Centre CGC
	DJCC Principal	D'Joy Children's Centre CGC
	FWCS Director	FamilyWorks Community Services CGC
	MWS HJ Head	MWS HomeJoy CGC
	RSG Head	Residence @ St. George's CGC
	TFSC Director	Tampines Family Service Centre CGC
	WSAC Supervisor	Wesley Seniors Activity Centre CGC

KEY MANAGEMENT



Standing (L-R): Julie Tan (DJCC Principal), Joachim Lee (TFSC Director), Jamie Phang (MWS HJ Head), Teo Khoon Seng (CACE Manager), Jenny Bong (Group Executive Director), Diana Ooi (BMNH Head), Coreen Chua (HR Director), Norman Wong (Chaplain), Florence Lim (CFSC Director)

Seated (L-R): Yap Lee Lee (Communications & Engagement Director), Edmund Koh (FWCS Director), Fong Mee Sim (Finance & Administration Group Director), Connie Ng-Teo (DFSC Director), Audrey Rajalingam (RSG Head)

Not in photo: Florence Ho (CMH Director) and Kwok Sian Yee (WSAC Supervisor)

MWS FAMILY



1 BETHANY METHODIST NURSING HOME
2 FAMILYWORKS COMMUNITY SERVICES
3 AGAPE METHODIST HOSPICE (HOMECARE)

4 COVENANT FAMILY SERVICE CENTRE
5 RESIDENCE @ ST. GEORGE'S
6 CHARIS ACE
7 D'JOY CHILDREN'S CENTRE



8



9



10



11



12



13

8 CHRISTALITE METHODIST HOME
9 MWS HOMEJOY
10 DAYBREAK FAMILY SERVICE CENTRE

11 TAMPINES FAMILY SERVICE CENTRE
12 MWS HEADQUARTERS
13 WESLEY SENIORS ACTIVITY CENTRE

CENTRE GOVERNANCE COMMITTEES

AGAPE METHODIST HOSPICE

(Homecare)

Chairperson

Mr Chan Wing Leong

Vice-Chairperson

Dr Agnes Ng

Members

Dr Chen Ai Ju

Dr Ting Wen Chang

Mr David Row

Ms Lai Bew Meng

Mrs Tan Ee Leng

(wef. 1 Nov 2015)

MWS BOG Rep.

Mr Yow Chi Mun

(wef. 26 Sep 2015)

Mrs Tan Ee Leng

(Stepped down on 26 Sep 2015)

BETHANY METHODIST NURSING HOME

Chairperson

Mr David Wong Cheong Fook

(wef. 01 Nov 2015)

Rev Dr Daniel Koh Kah Soon

(Stepped down on 31 Oct 2015)

Members

Rev Dr Daniel Koh Kah Soon

(wef. 1 Nov 2015)

Mr David Wong Cheong Fook

(Stepped down on 31 Oct 2015)

Dr Chen Ai Ju

(Stepped down on 10 Oct 2015)

Dr Ong Peck Leong

(Stepped down on 31 Oct 2015)

Dr David Foo Chee Guan

Mr Chan Kum Kit

Mr Andrew Lee

Ms Mak Wei Munn

Dr Esther Tan

Dr Michael Ong Chin Cheong

Mr David Ang

Mrs Audrey Lee

Dr Dex Khor Teik Heng

Mr Lam Wei Choong

(wef. 01 Nov 2015)

CHARIS ACTIVITY CENTRE FOR ELDERLY

(Partner Church: Charis Methodist Church)

Chairperson

Prof Lionel Lee Kim Hock

Vice-Chairperson

Mr Robert Goh Say Hong

Secretary

Mr Richard Tan Keng Hee

Members

Mr Khoong Hock Yun

Dr Tan Soh Cheok

MWS BOG Reps.

Dr Lee Wee Leong

Dr David Foo Chee Guan

(Stepped down on 26 Sep 2015)

Ex-Officio

Rev Helen Hoe Chiew Ngin

CHRISTALITE METHODIST HOME

(Partner Church: Christ Methodist Church)

Chairperson

Mr Ling Ting Soo

Secretary

Ms Florence Lee Chui Fong

Treasurer

Mrs Seow-Soon Yang San

Members

Col (Retd) Raymond Tan Kwang Meng

Mr Stanley Lee Hong Kiat

Dr Peter Ng Teck Hwee

Mr Freddy Wan Wee Jiun

Ms Anne Phan Tjoei San

Mr Mark Chan Tuck Hoe

Ex-Officio

Ps Barnabas Chong Chien Chih

MWS BOG Rep.

Ms Christine Pushpam Tambyah

(wef. 26 Sep 2015)

Mr Joseph Toh Guan Kiat

(Stepped down on 26 Sep 2015)

COVENANT FAMILY SERVICE CENTRE

(Partner Church: Paya Lebar Methodist Church)

Chairperson

Mr Choi Chik Cheong

Vice-Chairperson

Mr Keong Choon Jin

Treasurer

Mr Herbert Ng Choon Ling

Members

Mr Richard Yeo Lee Hock
Mrs Magdalene Low Siah Ing
Mr Jiang Ke-yue
Mr Chan Kah Guan
Mr Jimmy Leong Yue Wah
(Stepped down on Jan 2016)

Ex-Officio

Rev Irene Thung

MWS BOG Rep.

Mr Ronnie Gan Seow Khaw
(wef. 26 Sep 2015)
Mr Robin Cheong Chak Khiong
(Stepped down on 26 Sep 2015)

DAYBREAK FAMILY SERVICE CENTRE

Chairperson

Mr Albert Lim Song Khiang

Vice-Chairperson

Mrs Jocelyn Foo

Treasurer

Mr Yuen Chee Onn

Secretary

Mrs Teresa Kuek

Members

Dr Linda Haverkamp
Ms Lucy Ong
Ms Goh Poh Gek

D'JOY CHILDREN'S CENTRE

(Partner Church: Hinghwa Methodist Church)

Chairperson

Mr Soon Kay Hock

Vice-Chairperson

Mr Yap Chee Heng

Members

Mrs Maggie Khoo
Mrs Mary Seah
Mdm Yong Joo Yeon

Ex-Officio

Rev Joshua Tan Sin Kian
(wef. 1 Jan 2016)
Rev Dr David Koh Ah Chye
(Stepped down on 31 Dec 2015)
Mr Daniel Wong

MWS BOG Rep.

Dr Lee Wee Leong

FAMILYWORKS COMMUNITY SERVICES

(Partner Church: Changi Methodist Church)

Chairperson

Mr Freddie Chew

Vice-Chairperson

Mr Philip Ong Hui Leong

Members

Ms Faith Sing Mui Leng
Mr Dennis Chua Teck Meng
Mr Alvin Ng Tien Hock

Ex-Officio

Rev Jasper Sim Sheng Chyi

MWS BOG Rep.

Mr David Wong Cheong Fook

CENTRE GOVERNANCE COMMITTEES (CONT'D)

MWS HOMEJOY

Chairperson

Dr David Foo Chee Guan
(wef. 01 Nov 2015)

Members

Dr Khor Tong Hong
(wef. 09 Jan 2016)
Mrs Tan Ee Leng
(wef. 09 Jan 2016)
Ms Kwok Wan Yee
(wef. 09 Jan 2016)
Dr Winnie Wun
(wef. 09 Jan 2016)

Ex-Officio

Rev Dr Daniel Koh Kah Soon

RESIDENCE @ ST. GEORGE'S

*(Partner Agency: General Conference -
Women's Society of Christian Service)*

Chairperson

Mrs Lydia Sng

Vice-Chairperson

Ms Flora Chew Siew Keow

Members

Mrs Lydia Han Ho Yue
Ms Irene Leela
Ms Emily Tan Leh Kuang
Mrs Fum-Ko Joon Chin

MWS BOG Rep.

Mrs Fong Loo Fern

TAMPINES FAMILY SERVICE CENTRE

(Partner Church: Pentecost Methodist Church)

Chairperson

Mr Raymond Khoo

Treasurer

Ms Sandra Lee Siew Eng

Members

Dr Tan Kee Wang
Mdm Tay Chor Lin
Mr Leong Hoe Yin

MWS BOG Rep.

Rev Dr Daniel Koh Kah Soon

WESLEY SENIORS ACTIVITY CENTRE

(Partner Church: Wesley Methodist Church)

Chairperson

Mr Leow Kim Liat

Vice-Chairperson

Mr Daniel Chan

Members

Ms Shirley Koo
Mr Liew Yuen Loong
Mr Tang Ang Cheong, PBM
Mr Woo Sui Kee

MWS BOG Rep.

Mr David Wong Cheong Fook

Ex-Officio

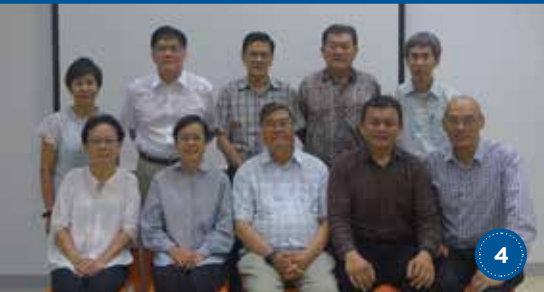
Rev Dr Kow Shih Ming

Adviser

Ms Denise Phua Lay Peng

CENTRE GOVERNANCE COMMITTEES (RIGHT):

1. AGAPE METHODIST HOSPICE (HOMECARE)
2. BETHANY METHODIST NURSING HOME
3. CHARIS ACTIVITY CENTRE FOR ELDERLY
4. CHRISTALITE METHODIST HOME
5. COVENANT FAMILY SERVICE CENTRE
6. DAYBREAK FAMILY SERVICE CENTRE
7. D'JOY CHILDREN'S CENTRE
8. FAMILYWORKS COMMUNITY SERVICES
9. TAMPINES FAMILY SERVICE CENTRE
10. WESLEY SENIORS ACTIVITY CENTRE
11. MWS HOMEJOY
12. RESIDENCE @ ST. GEORGE'S



COMMITTEES

Audit

Chairperson

Mr Tan Chian Khong

Members

Mr Chan Kum Kit
Mr Ronnie Gan Seow Khaw
Mr David Wong Cheong Fook

Chaplaincy

Chairperson

Rev Dr Daniel Koh Kah Soon
(wef. 26 Sept 2015)

Members

Rev Anil Samuel
(wef. 13 Feb 2016)
Rev Goh Aik Hiang
(wef. 13 Feb 2016)
Rev Vincent Goh
(wef. 13 Feb 2016)

Communications & Engagement

Chairperson

Mr Albert Lim Song Khiang

Members

Mr Tung Siew Hoong
(wef. 14 Nov 2015)
Ms Irene Teo
(wef. 14 Nov 2015)

Finance

Chairperson

Mrs Fong Loo Fern
(wef. 01 Nov 2015)
Mr Joseph Toh Guan Kiat
(Stepped down on 31 Oct 2015)

Members

Mr Yow Chi Mun
Mr Terence Phung Tuck Chee
Mr David Wong Cheong Fook
Mrs Fong Loo Fern
(Stepped down on 31 Oct 2015)
Mr Robin Cheong Chak Khiong
(Stepped down on 31 Oct 2015)

Human Resource

Chairperson

Mrs Loh Chay Leng

Members

Mr Aubeck Kam Tse Tsuen
Mr Lim Tat
Mrs Elaine Chua Lye Yin San

Information Technology

Chairperson

Dr Lee Wee Leong

Members

Mr Lam Wei Choong
(wef. 26 Oct 2015)
Mr Terence Wee Jin Zoo
(wef. 25 Jan 2016)

Investment

Chairperson

Mr David Wong Cheong Fook

Members

Mr Yow Chi Mun
Mr Tung Siew Hoong
Mr Clifford Lee Hock Tan
Mrs Fong Loo Fern

Service Planning & Development

Chairperson

Rev Jasper Sim Shenq Chyi

MWS Nursing Home Taskforce

Chairperson

Mr David Wong Cheong Fook
(wef. 13 Feb 2016)

Members

Mr Charles Loh
(wef. 13 Feb 2016)
Ms Audrey Lee
(wef. 13 Feb 2016)
Mr Lam Wei Choong
(wef. 13 Feb 2016)
Dr Sabrina Wong
(wef. 13 Feb 2016)

Nomination (Term ended on 26 Sep 2015)

Chairperson

Mr David Wong Cheong Fook

Members

Rev Dr Daniel Koh Kah Soon
Mr Albert Lim Song Khiang
Rev Chua Ooi Suah
Mr Han Hai Kwang
Mrs Tan Ee Leng

Communications (Term ended on 31 Oct 2015)

Chairperson

Mrs Tan Ee Leng

Members

Mr Leow Kim Liat
Ms April Lee

Fundraising (Term ended on 31 Oct 2015)

Chairperson

Mr Albert Lim Song Khiang

Members

Mr Gan Kok Beng
Mr Lee Chong Min
Mrs Fong Loo Fern
Mr Christopher Tay

Policies adopted during the year include, but are not limited to, Finance policy, HR policy, Investment policy, and Nomination policy.



\$100

TO PROVIDE CARE FOR
THE CHRONICALLY ILL,
DESTITUTE AND FRAIL
WITH MEDICAL SUPPLIES

\$75

TO REHABILITATE
AT-RISK YOUTH
THROUGH A
STRUCTURED AND
MEANINGFUL JOURNEY



\$25

TO NURTURE DISADVANTAGED
STUDENTS THROUGH
EDUCATIONAL FIELD TRIPS

**YOU CAN
MAKE AN
IMPACT**

give.mws.sg

\$50

TO ENGAGE
SOCIALY ISOLATED
SENIORS THROUGH
RECREATIONAL AND
WELLNESS
PROGRAMMES

\$30

TO EMPOWER FAMILIES
IN DISTRESS THROUGH
PROGRAMMES TO
ENHANCE COPING SKILLS



Postage will
be paid
by addressee.
For posting in
Singapore only

BUSINESS REPLY SERVICE
PERMIT NO. 02007



METHODIST WELFARE SERVICES
70 BARKER ROAD #05-01
SINGAPORE 309936

FUNDRAISING EFFICIENCY RATIO

	FY 2015/16 \$	FY 2014/15 \$
Donations	2,911,621	5,991,976
Fund raising Income *	8,838,906	4,881,784
Sponsorships	211,317	165,679
Total Donations and sponsorships	11,961,844	11,039,439
Direct fund raising expenses	408,743	172,245
Indirect / Allocated Costs	257,324	186,482
Sponsorships	211,317	165,679
Total fund raising expenditure	877,384	524,406
Donations channelled to Programmes/Centres	11,084,460	10,515,033
Fund raising Efficiency Ratio before sponsorship	6%	3%
Fund raising Efficiency Ratio with sponsorship	7%	5%

*Amount includes funds raised for Social Concerns Fund of \$3,363,838 (note 29 of the Financial Statements).

GROSS ANNUAL SALARY BANDS WITH CORRESPONDING NUMBER OF EMPLOYEES AS AT 31 MARCH 2016

Gross Annual Salary Range (S\$)	Number of employees	
	FY2015/16	FY2014/15
Up to \$100,000	360	349
\$100,001 - \$200,000	12	8
\$200,001 - \$300,000	1	1
Total	373	358

MWS CENTRES & PROGRAMMES



DISADVANTAGED CHILDREN

D'Joy Children's Centre

Blk 1 Maude Road #03-30
Singapore 200001
Tel: 6294 9960 Fax: 6294 9597
Email: djcc@mws.sg



CHRONICALLY ILL, FRAIL & DESTITUTE

Agape Methodist Hospice (Homecare)

2 Kallang Avenue
CT Hub #08-14
Singapore 339407
Tel: 6435 0270 Fax: 6435 0274
Email: amh@mws.sg

Bethany Methodist Nursing Home

9 Choa Chu Kang Avenue 4
Singapore 689815
Tel: 6314 1580 Fax: 6314 1576
Email: bmnh@mws.sg

Christalite Methodist Home

51 Marsiling Drive
Singapore 739297
Tel: 6368 5179 Fax: 6368 7127
Email: cmh@mws.sg

MWS HomeJoy

116 Changi Road #04-01
Singapore 419718
Tel: 6447 5117 Fax: 6247 7278
Email: hj@mws.sg



DISTRESSED FAMILIES

Covenant Family Service Centre

Blk 613 Hougang Avenue 8
#01-432 Singapore 530613
Tel: 6282 8558 Fax: 6283 6361
Email: cfsc@mws.sg

Daybreak Family Service Centre

Blk 855 Yishun Ring Road
#01-3539 Singapore 760855
Tel: 6756 4995 Fax: 6752 4709
Email: dfsc@mws.sg

Tampines Family Service Centre

Blk 470 Tampines St 44
#01-194 Singapore 520470
Tel: 6787 2001 Fax: 6787 4459
Email: tfsc@mws.sg

FamilyWorks Community Services

Sengkang Central
Post Office P.O. Box 865
Singapore 915408
Tel: 9784 9525
Email: fwcs@mws.sg

MWS Family Development Programme

(Administered by MWS HQ)
Tel: 6478 4700



AT-RISK YOUTH

Residence @ St. George's

1 St. George's Lane
Singapore 328047
Tel: 6391 0567 Fax: 6296 0942
Email: rsg@mws.sg



SOCIALLY ISOLATED

Charis ACE

Blk 125 Geylang East Avenue 1
#01-05 Singapore 381125
Tel: 6842 0497 Fax: 6842 0495
Email: cace@mws.sg

Wesley Seniors Activity Centre

Blk 25 Jalan Berseh #01-142
Singapore 200025
Tel: 6298 0195 Fax: 6298 0245
Email: wsac@mws.sg

MWS SEVA

8 Short Street
Singapore 188214
Tel: 8611 7374
Email: seva@mws.sg

MWS Senior Activity Centres Fernvale Rivergrove

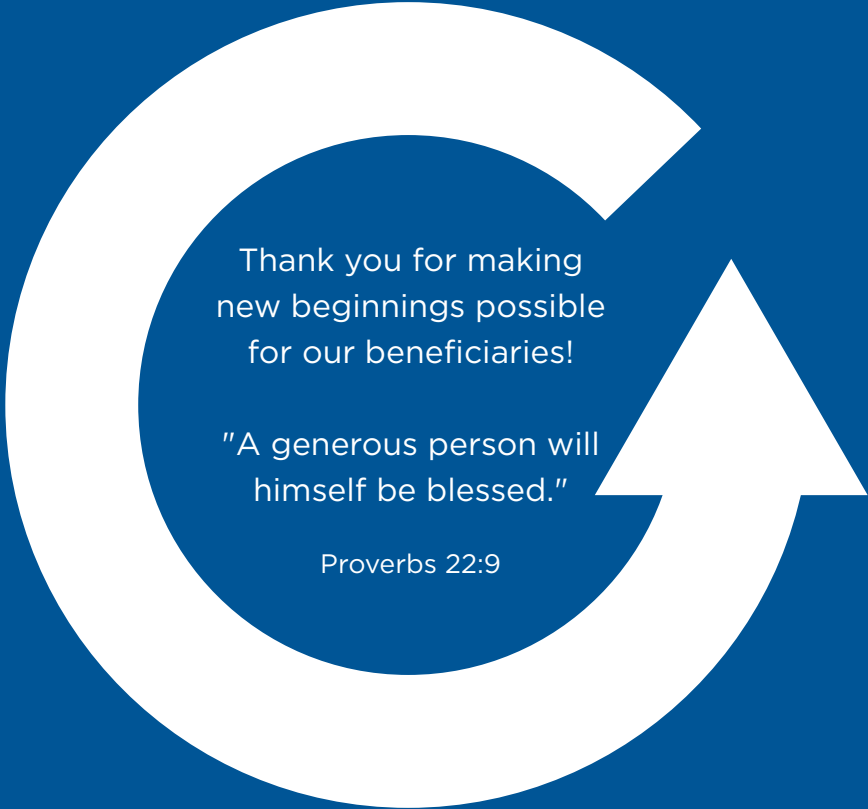
Blk 473A Fernvale Street
#01-17 Singapore 791473
Tel: 6481 7395 / 6205 7429
Fax: 6634 1422
Email: sacfernvale@mws.sg

GreenTops @ Sims Place

Blk 64 Sims Place #01-227
Singapore 380063
Tel: 6747 1786 / 6747 1796
Fax: 6747 1803
Email: sacgreentops@mws.sg

Teck Ghee Vista

Blk 307D Ang Mo Kio Ave 1
#01-01 Singapore 564307
Tel: 6684 0361 / 6684 0341
Email: sacteckghee@mws.sg



Thank you for making
new beginnings possible
for our beneficiaries!

"A generous person will
himself be blessed."

Proverbs 22:9



Methodist
Welfare
Services

MWS HEADQUARTERS

70 Barker Road, #05-01, Singapore 309936
Tel: 6478 4700 Fax: 6478 4701

admin@mws.sg | www.mws.sg

www.facebook.com/methodistwelfareservices
www.instagram.com/mws.sg